

**COLUMBUS**

**GEORGIA**

**THE  
ELECTRIC  
CITY**



Compiled and Published Under the Direction  
of the  
CONVENTION AND PUBLICITY BUREAU  
CHAMBER OF COMMERCE  
COLUMBUS, GEORGIA

Art Work and Illustrations by  
BALTIMORE, MD., ENGRAVING CO.,  
Baltimore, Maryland

Printing by  
COLUMBUS OFFICE SUPPLY CO.,  
Columbus, Georgia

## AN INVITATION

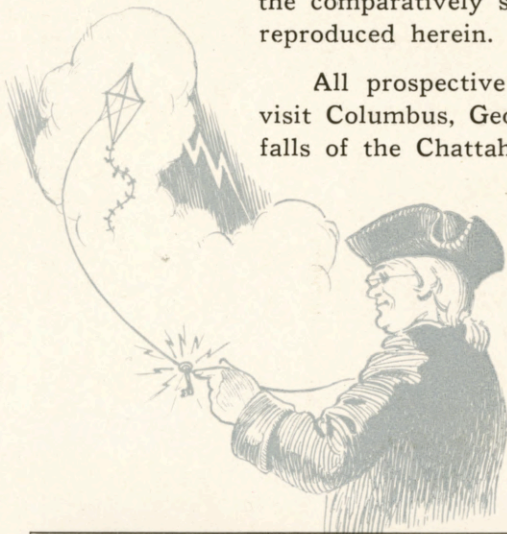
**W**E WANT you to read this booklet. It has not been filled with dry statistics. Instead we have presented within the covers, many photographs, realizing that reproduction of our great industries, waterpower, Fort Benning, churches, schools, recreational facilities, etc., will offer "the next best thing" to an actual visit to Columbus, Georgia.

Of course we will be pleased to send specific data to any inquirer and will deal fully with the subjects on which information is requested.

Columbus, Georgia, has a great future. With this statement you will agree after reading the comparatively short story of Columbus and studying the photographs reproduced herein.

All prospective homeseekers, siteseekers and sightseers are asked to visit Columbus, Georgia, where navigation meets power at the foot of the falls of the Chattahoochee river.

"The next best thing to living in Columbus is to visit her often."



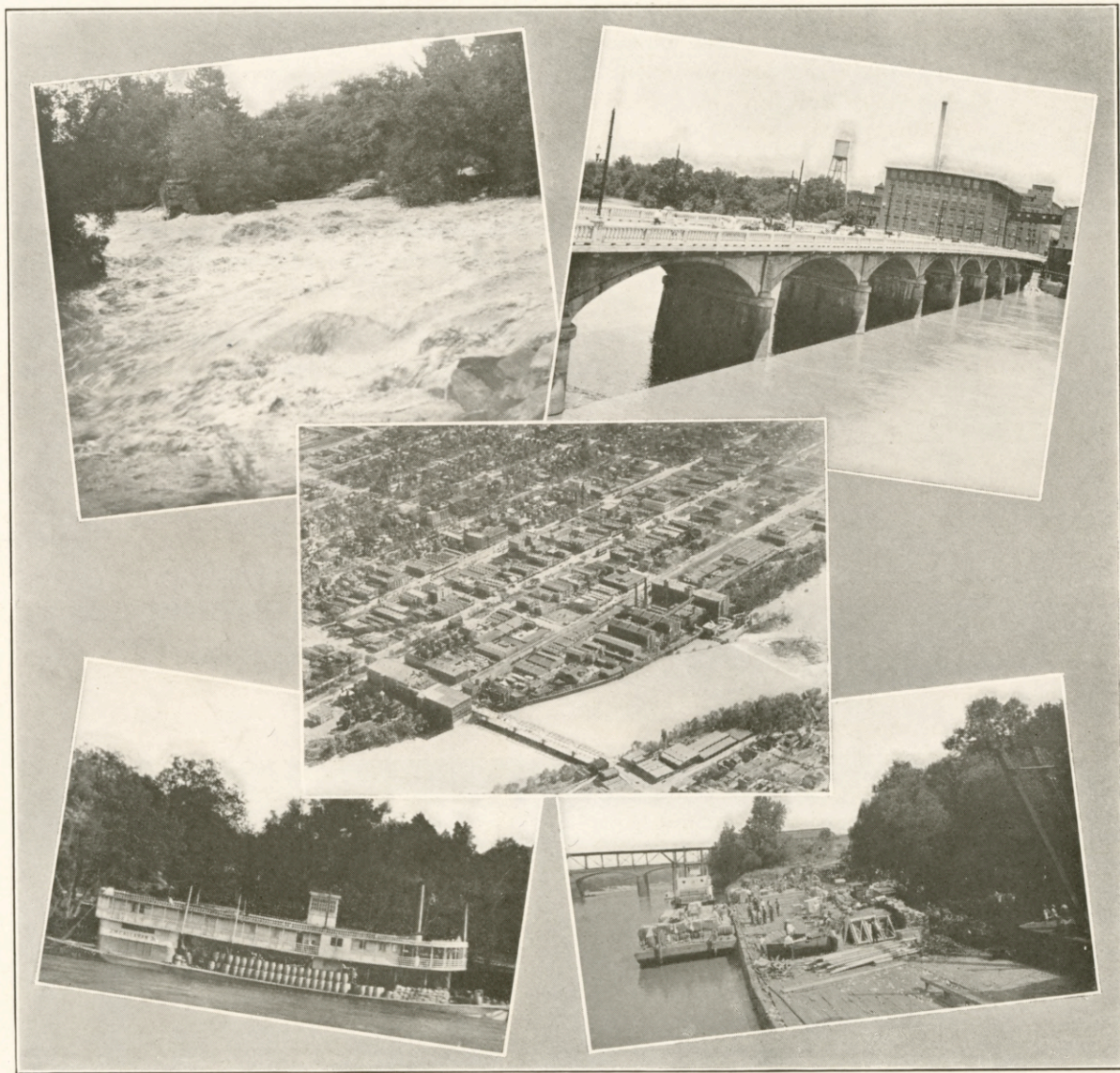
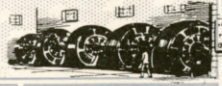
*The*  
Chamber of Commerce  
COLUMBUS, GEORGIA



Night View of a Street in "The Electric City"



COLUMBUS, GEORGIA *The* ELECTRIC CITY



Chattahoochee Rapids

River Navigation

River Near Heart of City

Bridge Connecting With Alabama

Freight Bound for Gulf



## COLUMBUS, GEORGIA *The* ELECTRIC CITY

### A BRIEF SUMMARY



COLUMBUS, GEORGIA, did not just happen. It was planned. It is logically the location of a city and Columbus came into existence, not arbitrarily, but by reason of a peculiar and unusual combination of natural conditions. In the entire Southland there is not a more obviously natural city-site.

Nearly 100 years ago the State of Georgia became so impressed that here was the logical site for a manufacturing and trading city that it did a very unusual thing for a Commonwealth: It created a city, named it COLUMBUS in grateful recognition of the discoverer of America, laid it off on a generous plan that today is a model for comfort and spaciousness, conducted the sale of lots, and as a State sponsored the new municipal enterprise.

Nature set the stage, laid the foundation, provided the unusual condition of climatic and physical conditions, and Man then, with his knowledge and science, stepped upon the stage and, amid conditions ideal for the creation of a city, applied his best thought and skill in the design of a modern town. There is nothing accidental or haphazard about the location and laying off of Columbus. In a broad valley, between the encircling hills, at the foot of the river falls and at the head of navigation of that river, Nature had set its city-site. Man's province was to use and develop that site to the best possible advantage.

The engineers of the State of Georgia laid off the city and as they ran their straight lines through the primeval forests they could vision the great manufacturing and trading center of the future. In the face of discomfort and even danger, for hostile Indians lurked nearby, these engineers did a wonderful work. Broad and straight they laid the avenues and streets, with ample room for light, air, trees, grass and flowers; breathing space a-plenty, such as is found in Columbus to this day. The avenues, paralleling the river, run almost due North and South, and the streets cross them at right angles, so that Columbus is a checkerboard town.



COLUMBUS, GEORGIA *The* ELECTRIC CITY



Masonic Temple Building  
Twelfth Street

Murrah Building

Georgia Home Building  
Broad Street

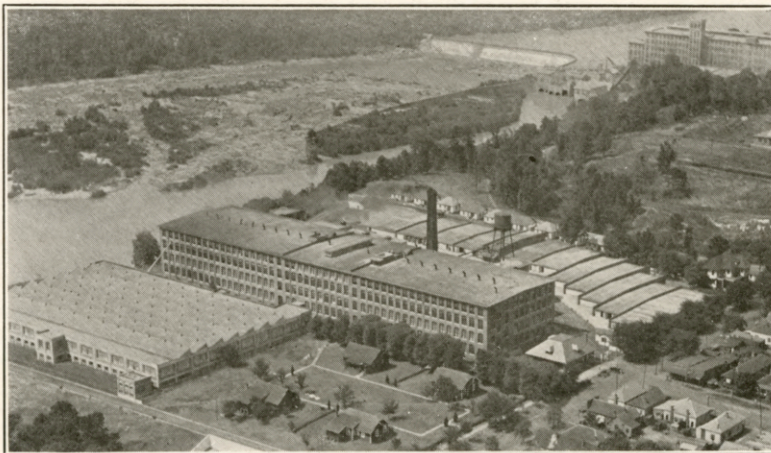
## COLUMBUS, GEORGIA *The* ELECTRIC CITY

The State of Georgia deliberately established the city of Columbus for three reasons. First to extend the outpost of white civilization to the extreme western section of the state and facilitate the agricultural development of West Georgia. Second, to utilize in an industrial way the wonderful water-power of the Chattahoochee river. Third, to provide another important transportation system for West Georgia by utilizing the Chattahoochee from Columbus to the Gulf of Mexico.

Within a short period of time a fleet of steamboats was plying the Chattahoochee between the city and the Gulf of Mexico, more than 300 miles away. Columbus with its wealth of waterpower, became a manufacturing city of importance long before the civil war. Today it has great prestige as an industrial center. It is the second cotton manufacturing city in the South; it is the largest Southern manufacturer of business furniture; it has great iron-working establishments; it is one of the greatest manufacturers of clay products in the South; it has a group of great fertilizer factories; as a manufacturer of cotton gins it has high rank; it manufactures lumber and millwork on an extensive scale; and its varied industries are large and increasingly important. Columbus' population increased 51.4% in the past decade which was a greater increase than in any other Georgia city. Within three miles of the county court house there are 65,575 people.

### RIVER A FACTOR IN CITY'S GREATNESS

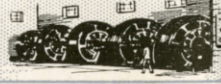
The Chattahoochee river, one of the important streams of the Southeast, is the greatest natural factor in Columbus' industrial and civic greatness. The engineers for the State of Georgia as they pushed their surveys through the forests, with the sound of the mighty cataracts constantly in their ears, must have been thrilled with the sensation of both discovery and prophecy, as their imagination ran into the future and they pictured the giant industries that must in time line that stream. The furthest-South great water-power is that of the Chattahoochee



Columbus Manufacturing Company



COLUMBUS, GEORGIA *The* ELECTRIC CITY



Poultry Farm  
Fine Cattle

Truck Farm  
Pecan Orchard  
Potato Curing Plant

Dairy Farm  
Columbus Creamery





## COLUMBUS, GEORGIA *The* ELECTRIC CITY



river at Columbus. The falls begin 34 miles north of the city and the river drops 362 feet before it reaches the calmer flow at the Columbus wharves where the steamboats ride. There are now four dams at and near Columbus and construction of another hydro-electric plant at a cost of five million dollars has begun.

As a transportation factor, the Chattahoochee river fills an unique and important role for the City of Columbus. The river not only serves its many utilitarian purposes, but is also one of the assets of Columbus in still another sense. It is an attraction, an added charm, for one of the most interesting experiences of tourists is to make this leisurely picturesque river trip from Columbus to the semi-tropic waters of the Gulf; a journey marked by ten separate varieties of scenery as carefully tabulated by the statistician.

### ABUNDANCE OF ELECTRIC POWER

Columbus was among the first manufacturing cities of America to sense the industrial possibilities of the extended use of hydro-electric power, and today is one of the great power centers of the South. Practically all its industries are operated by electricity generated by the falling waters of its river, and the same subtle energy, so pliant and so easily transmitted, is conveyed to many towns and villages throughout West Georgia to turn the wheels of industry. The first cotton mill in the world to be electrically operated is located in Columbus. Today Columbus has 100 successful manufacturing plants, making 200 different articles.

### AGRICULTURAL ACTIVITIES

With many of these plants needing cotton as the basis for their manufactured products it is only natural that there should be an abundance of cotton near Columbus, which is in the heart of the great cotton producing section. It is brought into the city and placed in mammoth warehouses, reaching these by rail, water and roads. But it should not be construed that King Cotton is the only crop. There are other staple crops common to the Southland and the Chamber of Commerce, with the assistance of civic clubs and other organizations, has in recent years had their efforts rewarded by a creamery being established. This creamery



Federal Building

COLUMBUS, GEORGIA *The* ELECTRIC CITY



Broad Street Looking Toward Swift Kyle Building

Rialto Theatre

Third National Bank Building

Doctors Building

Dimon Court Apartments

## COLUMBUS, GEORGIA *The* ELECTRIC CITY

has already proven a success and farmers are afforded a cash market for their cream. The skim milk is used to fatten hogs and chickens for which a ready market is found. A sweet potato storage and curing house is another project in operation to help the farmer in his diversification work.

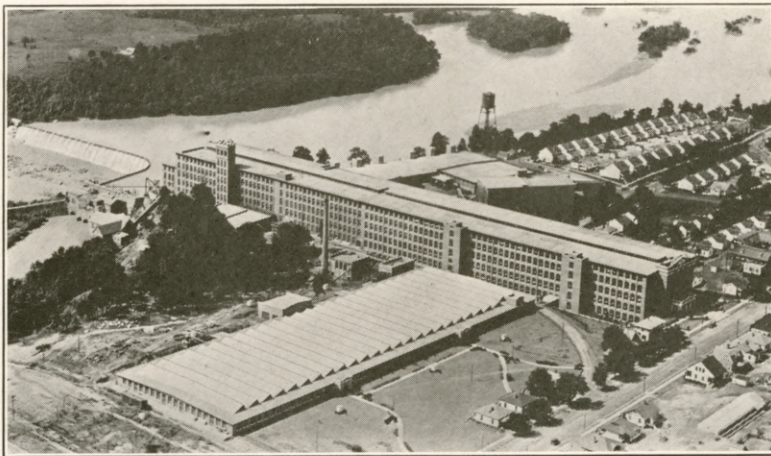
The County Agent, the home economics agent, the Rural Department of the Chamber of Commerce and the Chattahoochee Valley Fair Association are "full time" organizations at the service of the farmer. Farm lands can be bought at reasonable prices when one considers the advantages so nearby in the city of Columbus. The laborer and farmer both are happy at work knowing that their children are being given the best education to be found in public schools anywhere.

Truck crops, livestock, and the big crops, are now common on farms in this community and every effort is being made to make conditions surrounding agricultural pursuits more attractive by affording markets in Columbus for all crops and products of the farm and farm home.

Dairying and poultry raising have increased so much in the past few years that the owners of livestock and chickens have their own associations. Pecans are grown profusely and the largest pecan factors in the world have their large shelling plant at Columbus.

### BEAUTY ASSURED HUNDRED YEARS AGO

Columbus is noted as being a city of wonderful beauty. The foundation for all this was laid by the engineers of the State of Georgia, when they made the streets from 99 to 164 feet wide, and also made reservations for public buildings and churches — great squares, in the center of the city. The city of Columbus has been most progressive in planting trees and beautifying the streets. The work, in one form or another, has been prosecuted for nearly 100 years. In one year, alone, some 20 years ago, the city set out 10,000 shade trees! A beauti-



Bibb Manufacturing Company



# COLUMBUS, GEORGIA *The* ELECTRIC CITY



Confederate Monument  
Church Square  
St. Elmo

The Bridge in Wildwood  
Oglethorpe Boulder  
Green Island Ranch



## COLUMBUS, GEORGIA *The* ELECTRIC CITY



ful and comprehensive system of street parks has been created. Today Columbus is one of the loveliest cities in the world, and visitors and tourists pay genuine and enthusiastic tribute to its beauty and attractiveness.

### MILLIONS FOR CONSTRUCTION.

The development of Columbus in recent years has been particularly rapid, and the volume of building and general improvement each year is substantial and imposing. In one recent year the new construction totaled ten million dollars, this including commercial and residential construction, public work, industrial enlargement, and construction for the 12-month period at The Infantry School at Fort Benning, near the city.

The spirit of the municipal government is progressive, and each year sees much accomplished, with still greater plans for the future. Columbus has the commission-city manager form of government. Within the comparatively recent past two great concrete bridges have been built across the Chattahoochee river at Columbus connecting the city with Phenix City, Ala., having a population of 15,000. Street improvement, including paving and other items, is constantly being extended. A half-million dollar viaduct was built during 1924. The citizens have just approved bond issues totaling \$900,000 for a new high school, a stadium, parks and playgrounds, sewers and paving and additional fire stations.

### CLIMATE A GREAT ASSET

Columbus' climate is one of its greatest natural assets. It has a wonderful winter climate, the golden mean between the severe temperatures of the North and the enervating weather of the resort cities three or four hundred miles to the South. Here is found a pleasant, delightful climate—not too cold, not too hot—with enough balm and genial sunshine to “thaw out” the most blanket-wrapped tourist, and yet with enough tang in the air to prevent that languor and listlessness that the sub-tropics are apt to bring, especially to those coming from those Northerly latitudes where one's body is naturally toned to resist the rigors of winter. Columbus is about 150 miles north of the Florida line, as the airplane flies. Tourists are heartily welcomed; they find not only a pleasant climate, but much to interest them historically. Building and other outdoor work throughout the winter is done.

### CITY HAS HELPED TO MAKE HISTORY.

Columbus is naturally a charming and beautiful city, a source of continuous delight to the tourist, and its historical distinctions add greatly to its interest. Here the last battle of the Civil War was fought, beginning on the Alabama side of the Chattahoochee, and ending on the Georgia shore, April 16, 1865. Huge cotton mills now cover the field where the last cas-

COLUMBUS, GEORGIA *The* ELECTRIC CITY



Country Club  
Harmony Club

Muscogee Club  
Elks Club



## COLUMBUS, GEORGIA *The* ELECTRIC CITY



ualties occurred in that great conflict, which, with the passage of more than half a century, has already assumed the softened perspective of the American War of Roses.

Columbus furnished more soldiers to the Southern Confederacy in proportion to population than any other Southern city. It was in the heart of a Columbus woman that there first sprang the thought of the Southern Memorial Day, a beautiful sentiment that made its appeal literally from ocean to ocean, so that Memorial Day and Decoration Day are now established American institutions, and as long as time itself shall last, the memory of the brave soldiers who fought in that war shall be honored.

One of the largest Indian cities in America was located a few miles from the site of Columbus, and this section is rich in Indian history and relics. The Creek city of Coweta-town, as it was afterwards called, had at one time 15,000 inhabitants. There, nearly 200 years ago, General James Oglethorpe, then governor of Georgia, made a treaty with the Creeks which saved Alabama and Mississippi for England, in the face of aggression from the Spaniards on the South and the French on the West. This treaty profoundly affected the course of American history and the fate of this continent. An historian of note characterizes it as one of the most important treaties consummated in the history of the world. To meet the Indians, General Oglethorpe, making his way from Savannah, traveled through 300 miles of trackless forests. A granite boulder, in the city limits of Columbus, marks the point where General Oglethorpe crossed the Chattahoochee river on his famous trip. It was erected by the Daughters of the American Revolution, and, to visitors, is naturally one of the most interesting objects at Columbus.

The only monument in America built by a municipality to a negro is in Columbus. Bragg Smith, a colored employee of the city, met the death of a hero while trying to rescue the superintendent of public works from the collapsing banks of a trench.

Columbus has furnished to the nation such men as Samuel Spencer, president and developer of a great railroad system; Mirabeau B. Lamar, president of the Republic of Texas; George Foster Peabody, philanthropist and social worker; the Strauss brothers, noted as statesmen, merchants and philanthropists; Augusta Evans Wilson, noted novelist.

### COLUMBUS RECREATIONAL FACILITIES

There are a number of recreational places and every form of sport adaptable to this climate is enjoyed. In place of sports on ice we substitute sports for sunny climes. The Country Club, with its home on a beautiful knoll, has an 18 hole golf course. A professional is employed. A swimming pool is directly down the hill from the club house. There

—Continued on Third Page Following \*



# COLUMBUS, GEORGIA *The* ELECTRIC CITY



## Hydro Electric Development Responsible for Columbus' Industries



OR three quarters of a century Columbus has been a manufacturing city, and its importance has steadily increased with each decade. In recent decades that growth has been particularly marked.

Located at the farthest-south of the great water powers of America; within 150 miles of large deposits of coal, iron and lime stone, in the heart of the cotton belt, with raw material at the factory door for its textile industry, and at the head of navigation of an important river flowing to the Gulf of Mexico, 300 miles away, the natural advantages of Columbus for manufacturing are marked, and these have been supplemented by the construction of seven railroads, giving ample transportation facilities, in conjunction with the river steamer service. And all this has been further supplemented by the notable enterprise of Columbus men in the industrial field.

Thus, a Columbus cotton mill was the first textile plant in the world to be electrically oper-

ated. A Columbus textile plant was the first in the world to be lighted with electricity generated at its own plant. It was in Columbus that artificial ice was first made commercially.

Climatic conditions in Columbus are favorable for manufacturing. Living conditions are excellent. The labor is native labor; English is the only language spoken in the great factories of Columbus.

Machine shops and foundries with modern equipment and ample facilities constitute an important industry; thus, parts, castings and supplies can be obtained from home plants by the large industries of the city, and this is not only convenient but saves time and money. Columbus has several mill supply houses.

Columbus' first cotton mill was established exactly three quarters of a century ago. In the early decades of the industry the mills were located along the final falls of the Chattahoochee, in the heart of the city, and were operated by direct water-power. A quarter of a century ago

electricity was introduced into Columbus cotton mills and since then, as electric power in large volume has been provided through the erection of a series of hydro-electric plants, the growth of the industry has been marvelous, so that today this city, with nearly a half million spindles, is the second cotton manufacturing city in the South. Another hydro-electric plant is to be built at once on the Chattahoochee river near Columbus, thus insuring a continuous supply of power. Pictures of two of these mills, the Bibb Manufacturing Co., and the Columbus Manufacturing Co., are shown in this book. The airscape at the top of this page is the great Goat Rock power development.

Columbus was the pioneer in the South in the manufacture of bank, office and business fixtures, and today is the largest manufacturer of fixtures in this section of the country. The city builds from two and one-half to three million dollars of cotton gins and related machinery annually. It has four machine shops and foundries, and the investment in this

line, including new railroad shops, is in the millions. It has several large fertilizer manufacturing plants and is among the leaders in this industry in the South. The city has a number of large lumber and millwork manufacturing plants. It has a wealth of smaller industries, of varied character, and this class of factories steadily increases, both in number and in volume of business.

Columbus with a wealth of fine clay, is one of the leading centers in the South in the manufacture of brick, tile and other clay goods. There are five large clayworking plants, with a total potential output of about a half-million brick daily. The hollow tile manufacturing capacity is several hundred tons daily. All the clayworking plants are electrically operated; three of them made the change from steam to electricity, as the driving power, in 1923. Columbus, with her 100 successful manufacturing plants making 200 different articles is industrially great.





COLUMBUS, GEORGIA *The* ELECTRIC CITY



Wildwood Park  
Suburban Driveway

Gun Club Grounds

Lovers Lane  
Cascade



## COLUMBUS, GEORGIA *The* ELECTRIC CITY

### *COLUMBUS' RECREATIONAL FACILITIES—Continued*

are numerous other pools in easy reach of the city. The Y. M. C. A., in addition to other facilities, also has a pool.

The proximity of Fort Benning allows Columbus people and visitors to enjoy all forms of sports. Polo is a great game with the army and there is a field at the Driving Park in Columbus and one at Fort Benning for polo matches, the spectacular and sensational sport that is fast gaining favor in the South. Baseball, basketball, football and tennis teams are all to be found at Fort Benning, and these stalwart athletes of Uncle Sam's army play under the Infantry blue of the Infantry School. The first inter-collegiate game of Lacrosse to be played in the South was played at Fort Benning. Columbus is the home of the Southern football classic, the Georgia-Auburn gridiron battle, which attracts an attendance of approximately 18,000 visitors. Big league baseball clubs train here.

The Columbus Gun Club has its own traps at the Driving Park, the sport center. The Columbus Rifle Club, mainly composed of war veterans, has an active organization. The American Legion club has gym facilities.

### OFFERS MUCH TO TOURISTS AND SPORTSMEN

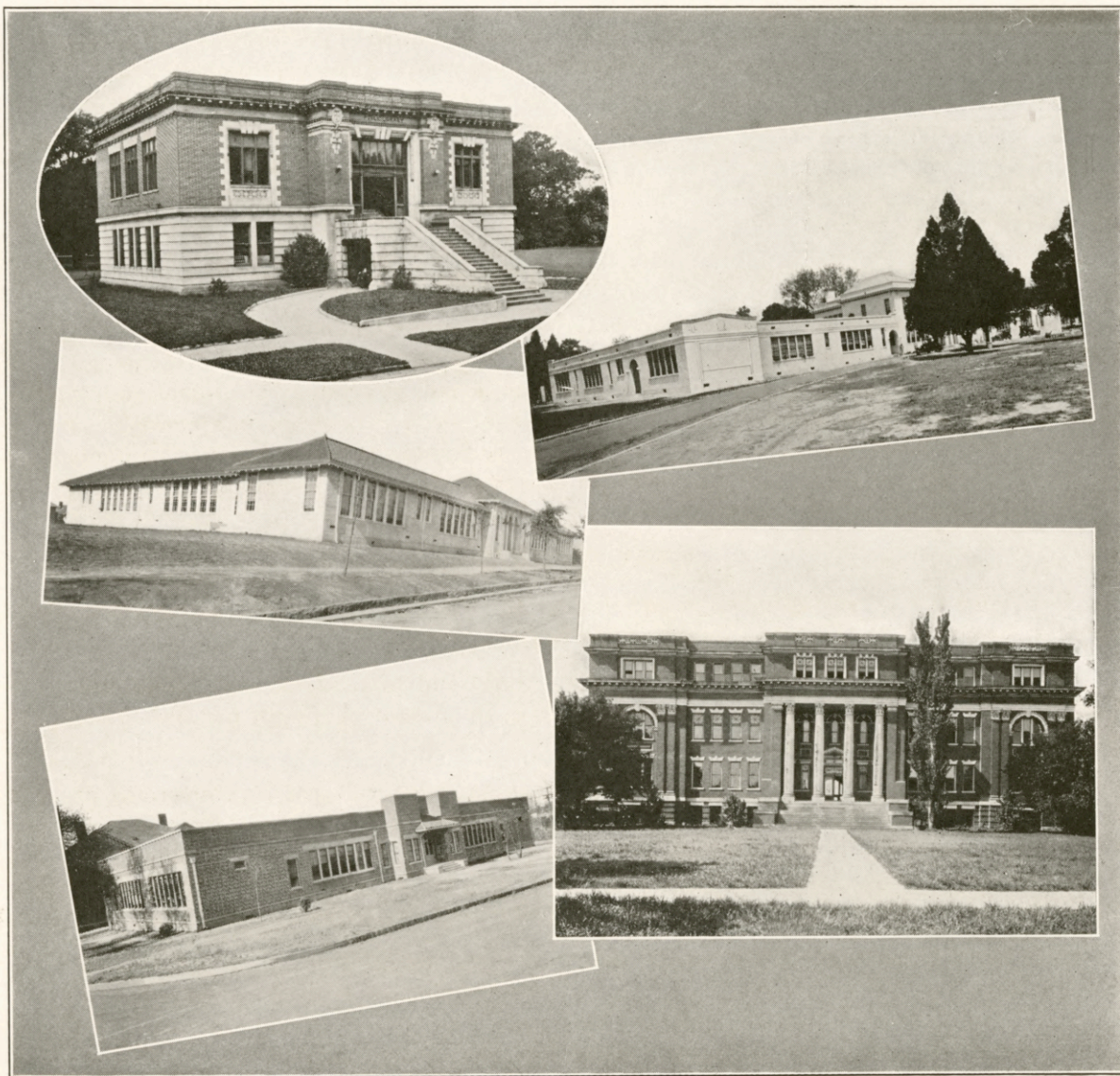
The country in the vicinity of Columbus, with its ranges of high hills, is beautifully picturesque. Automobile highways extend to Warm Springs, one of the noted resorts of the South, 42 miles away; to the great cemetery at Andersonville, 62 miles away; to Montgomery, first capital of the Southern Confederacy, 96 miles away; Stone Mountain, 134 miles away; Tuskegee Institute, 44 miles away; and to other points of interest.

An abundance of game and fish near Columbus makes this community especially desirable for the wielder of the rod or the huntsman. Small game is found nearby. Down the picturesque Chattahoochee river you can go until you reach the Dead Lakes region, probably the greatest paradise for hunters and fishermen in the South. Big game and real fishing can be enjoyed here under the most favorable conditions. The duck season is a real joy. At no time from November to March are there less than thousands of ducks on the lakes, which spread out over about 60 square miles of fresh water—fed by a tributary of the Chattahoochee. Deer and other game is in abundance. The lakes abound in bream, shell crackers, black bass and trout. Boats and other supplies are provided at the lakes. Comfortable living accommodations are available and any sportsman who comes South and fails to visit this great region misses something in his life as a lover of the hunt or the rod.

### MODERN IN EVERY WAY.

The city has ample and thoroughly comfortable hotel accommodations; adequate local

COLUMBUS, GEORGIA *The* ELECTRIC CITY



Public Library

Colored School

Another Modern School Building

Wynnton School

Columbus Industrial High



## COLUMBUS, GEORGIA *The* ELECTRIC CITY



transportation facilities, through trolley cars, busses and other types of motor cars; extensive golf links; club facilities; churches of all denominations; first-class amusement facilities, a well-equipped public library and, indeed, every advantage and facility to be expected in a city of 65,000 inhabitants. Incident to its prosperity and general expansion, the city is now in the midst of the greatest church-building and church-improving era in its entire history. Church improvements now under way or recently completed, represent an expenditure of several hundred thousand dollars.

### CITY'S GREAT EDUCATIONAL FACILITIES.

Columbus is one of the pioneers in popular education in America. In 1866 it established a system of public schools, being the first Southern city to take this step. It was the first municipality in the world to establish an industrial school providing vocational training for pupils of both sexes, and today the Columbus Industrial High School has international prestige in educational circles. In every section of the city are found attractive buildings, numbers of them of a distinctive design and arrangement known in Southern architectural circles as the "Columbus type" of school buildings.

### EASY TO REACH.

Columbus has seven railroads, in addition to her river. It is served by the Central of Georgia, Seaboard Air Line and Southern Railway systems.

Columbus is a good distributing point. The river-rail connections are highly desirable. Columbus is one of the "best" points on the rail lines in amount of freight handled in comparison to population.

Columbus, Georgia, with all her advantages as an industrial city, a commercial city and a city of pleasure—a well balanced city—is easy to reach. The three railroads, with the seven rail lines extending in all directions, affords one means of transportation. There is a real street car system ready every hour of the day after you arrive. If you come in your automobile to Columbus you'll know by the good roads that a real city is being approached.

The Dixie Overland Highway and the Florida Short Route are closely linked with "The Electric City," as offices of these two highway associations are located in Columbus. If you must leave Columbus, or want to know the best way to come to Columbus, the Chattahoochee Valley Motor Club will route you right. A bus line, with cars nearly as big as train coaches, operates an hourly schedule to and from Fort Benning, which is also reached by train from Columbus.



COLUMBUS, GEORGIA *The* ELECTRIC CITY



First Baptist  
St. Paul Methodist

Trinity Episcopal  
Church of the Holy Family

St. Luke Methodist  
B'Nai Israel Temple



## COLUMBUS, GEORGIA *The* ELECTRIC CITY



An opportunity exists for the establishment and successful development of certain lines of manufacturing not now represented in the industrial activities of the city, and full, detailed information concerning these opportunities will be given on application to the Columbus Chamber of Commerce.

The Chamber of Commerce provides a complete service for its members and the general business interests of the community, and included in its facilities is a recently-established full-time Traffic Department.

### HOME OF THE INFANTRY SCHOOL.

One of Columbus' greatest distinctions and assets is the fact that it is the home of the Infantry School, destined to be the greatest military institution in the world. On a tract of 97,000 acres, a few miles from the city, the United States has located its school for the training of its infantry officers under the conditions of actual warfare. The necessity for such training was emphasized in most tragic manner during the World War, and General John J. Pershing cabled home the message that resulted in the establishment of the school. The site near Columbus was selected after it, and many other sites, had been carefully inspected by various army boards, and climatic, physical, transportation and other conditions were such that this was deemed the logical location. The reservation was named "Fort Benning" in honor of General Henry Benning, noted jurist and Confederate general, who was one of Columbus' most distinguished sons. Expenditures of the United States government there to date, including purchases of land, total more than ten million dollars, and an ultimate investment of about twenty-five million dollars is planned.

There is almost every conceivable variety of terrain and combination of physical conditions on the reservation, and this makes it possible to duplicate practically every condition of warfare. A great deal of the instruction to student officers is in the open; and included among the students are veterans who come all the way from the Philippines, Panama, Honolulu and posts throughout Continental United States to take the course. The demonstrations are the nearest thing to actual battles one can see in times of peace.

On the reservation are the river, creeks, swamps, high hills, woods, cultivated grounds, plateaus of generous size in immediate proximity to hills—in short, that complete variety of terrain, which so attracted the attention of the inspecting army boards. High officials of the army, and at times the President and Secretary of War, make periodical visits to Benning. The population at the post is approximately 5,500 and it is the largest assemblage of army officers to be found at any one place in the United States. The presence of these men of edu-

COLUMBUS, GEORGIA *The* ELECTRIC CITY



Fort Benning Doughboys

Firing on the 97,000 Acre Tract

The Colors

"Somewhere in Benning"

Ready to Fire



## COLUMBUS, GEORGIA *The* ELECTRIC CITY



cation and culture, with their families, is a charming and interesting contribution to social and intellectual life in Columbus.

The Infantry School is described by Secretary of War Weeks as "the greatest school of arms in the world, bar none."

### ATHLETIC PROJECT AT BENNING

So enthused are the army men over athletics that they are building a mammoth athletic project at Fort Benning without the cost of one cent to the government, Infantry regiments over the country contributing to it for a memorial to the Infantryman.

The big project, costing approximately \$500,000, provides for a stadium, polo fields, courts for various forms of sports and when completed will be the greatest recreational place in any army post in America and probably in the world.

The completion of the project will place this community in a position to see some of the greatest athletic events to be staged in the United States. It will be the athletic center of army sports, and championship matches in all forms of sports will be decided there. The stadium, only a part of the general plans, is being rushed to completion for 1924 gridiron games.

### CONVENTION CITY.

Columbus, Georgia, through the Convention and Publicity Bureau of the Chamber of Commerce, has for several years attracted the attention of members of large bodies to the desirability of "The Electric City" as a convention city and now no city in the South enjoys more conventions, events, etc., than Columbus in proportion to its size... The proximity of Fort Benning and the work of the Infantry School add to the many attractions Columbus has to offer. The Convention and Publicity Bureau stays with a convention until after it is a success. That is the reason so many come back to again meet in "The Electric City." To any secretary of an organization planning a convention or to any committee, the Bureau will be pleased to tell how it will cooperate in making your convention a success. The Bureau has helped a number of organizations to get large attendance at conventions voting to go to Columbus and this service is free to you. The Bureau can and will be of service in many ways.

*The*  
Chamber of Commerce  
COLUMBUS, GEORGIA





# COLUMBUS, GEORGIA *The* ELECTRIC CITY



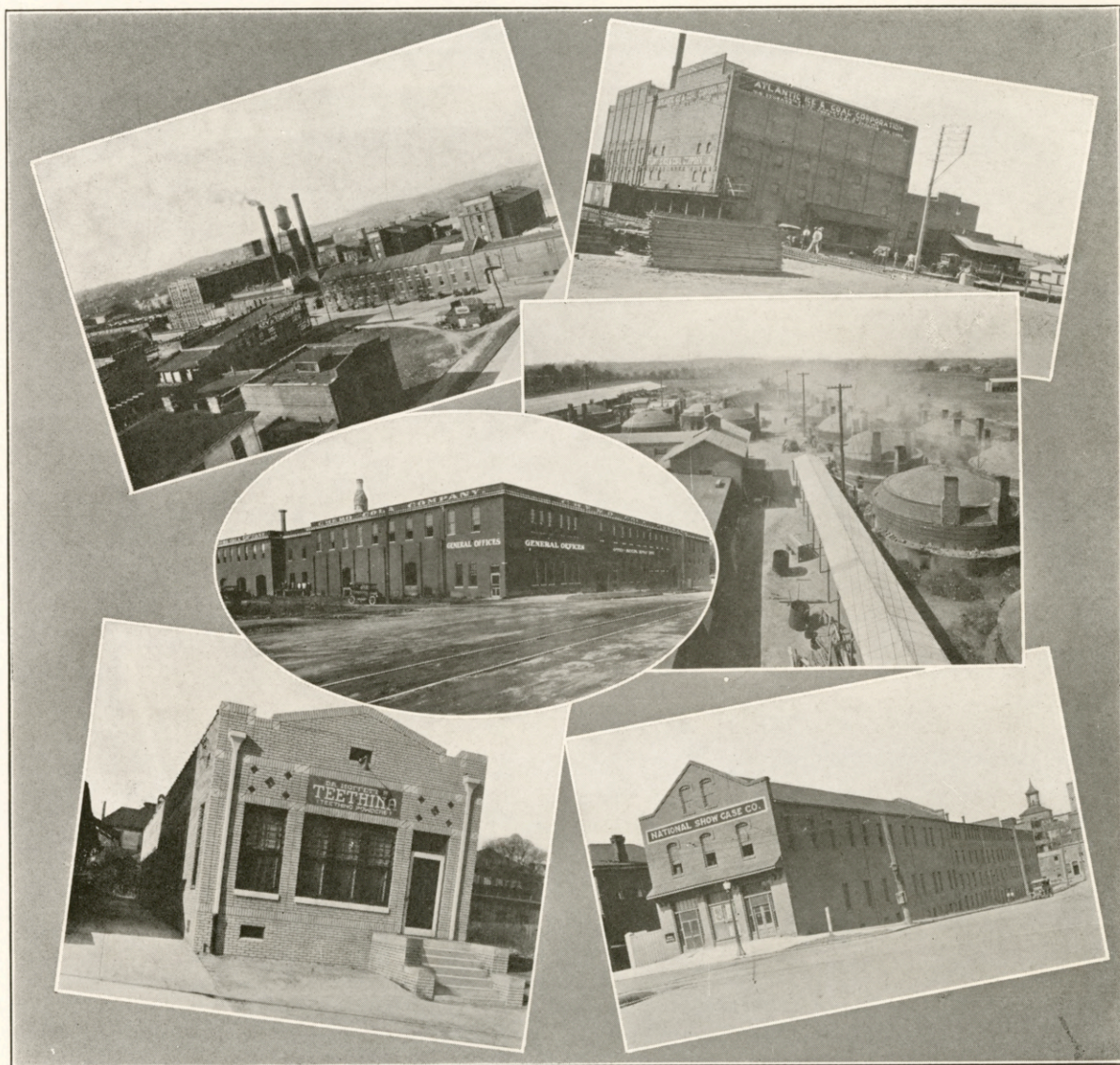
Hotel Terminal  
Waverly Hotel

Springer Hotel

Ralston Hotel

Racine Hotel  
Rankin House

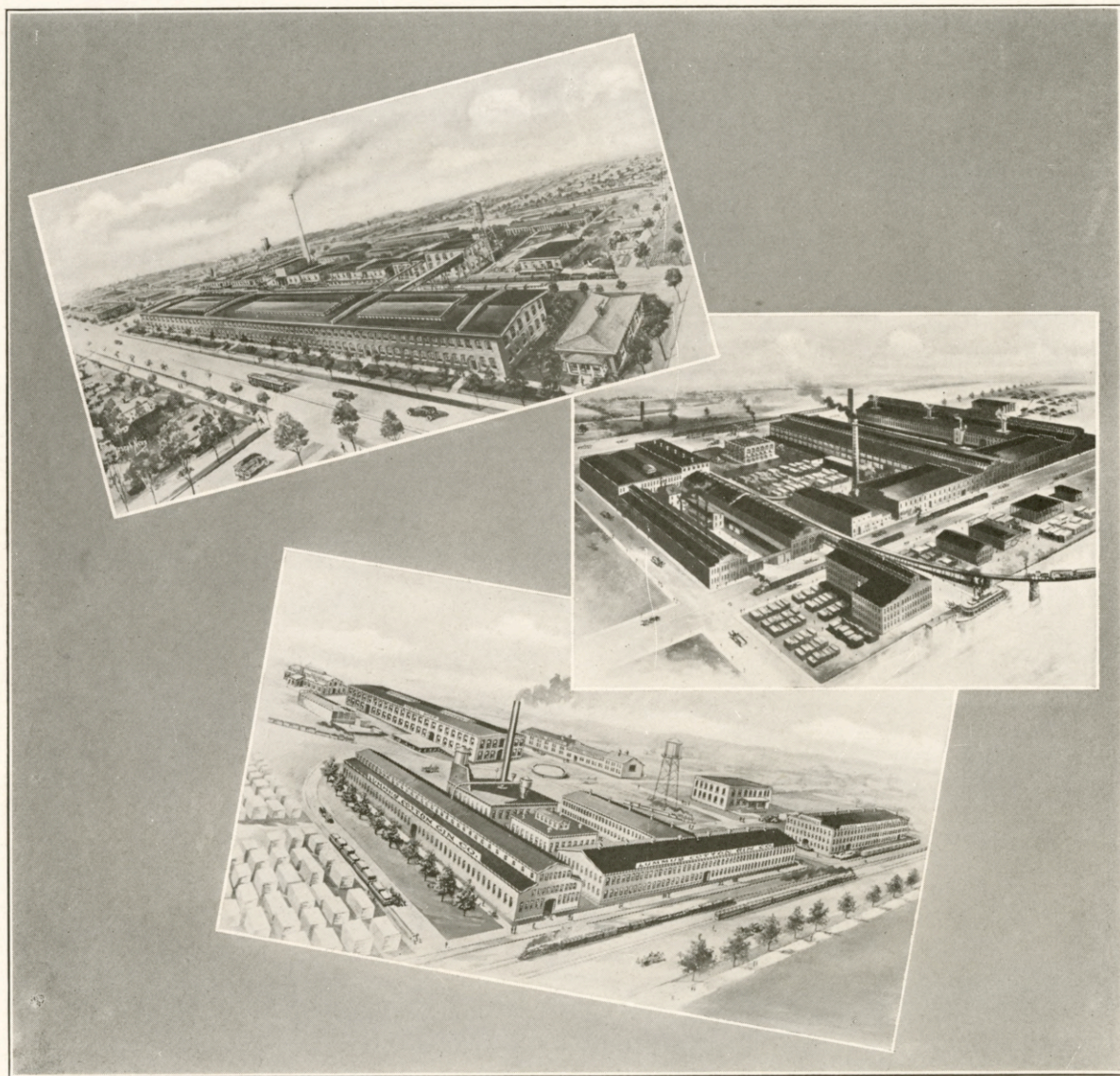
COLUMBUS, GEORGIA *The* ELECTRIC CITY



Eagle and Phenix Mills  
 The Home of Chero-Cola  
 C. J. Moffett Medicine Company

Atlantic Ice and Coal Corporation  
 Columbus Brick and Tile Company  
 National Show Case Company

COLUMBUS, GEORGIA *The* ELECTRIC CITY



Perkins Hosiery Mills

Lummus Cotton Gin Company

Columbus Iron Works

COLUMBUS, GEORGIA *The* ELECTRIC CITY



Colored Y. M. C. A.

Union Station

Administrative Building—City and County

Marble Y. M. C. A.

City Hospital

COLUMBUS, GEORGIA *The* ELECTRIC CITY



Steam Power Plant

Gas Plant and Chattahoochee River Bridge

Street Railway Transfer Station

Bradley Cotton Warehouse



## COLUMBUS, GEORGIA *The* ELECTRIC CITY

### COLUMBUS, GEORGIA

“The Electric City”

Has—

- Commission-Manager form of government. The county of Muscogee is also managed by a Commission.
- More than 50 churches.
- Rotary, Kiwanis, Civitan, Lions, Motor and Ad Clubs.
- American Legion Post, one of the 10 largest of 11,000 posts.
- A tax rate of 18 mills on a valuation of approximately 66%.
- More than 50 distinct fraternal lodges, councils, etc.
- Boy Scouts, Girl Scouts and Camp Fire Girls under supervision of experts.
- Federated women's clubs with a combined membership of hundreds.
- Six hotels and more than a half hundred cafes, tea rooms and restaurants.
- Two daily newspapers, morning and afternoon, and several weekly and monthly publications.
- 14 banks, state, national, trust companies, savings and industrial banks included. Bank clearings for 1923 totaled \$47,248,142.55.
- Two telegraph companies.
- Two express companies.
- Modern phone service.
- 24 hour service of gas and electricity for power, lighting and cooking.
- Public Health Nurse Association, Family Welfare Bureau, Salvation Army, Old Woman's Home, Girls' Orphans' Home, Red Cross Chapter.
- One of the best organized boards of health in the South.
- Modern city hospital with as good an X-Ray laboratory as is to be found in the South.
- All motorized fire department with several sub-stations.
- Efficient police department.
- Chamber of Commerce, Real Estate Board and numerous organizations of men and women associated together in various professions and vocations.
- Four dams for hydro-electric power with a \$5,000,000 project under way to take care of increased demands expected within next few years due to locating of new industries and expansion of plants now in operation.
- A public library.
- Retail stores carrying stocks to fill the wants of any purchaser.
- Road, rail and water transportation.
- An auto camp.
- A gun club and rifle club.
- Numerous social clubs.
- A stadium with capacity for 20,000 spectators.
- A polo field.
- Athletic contests of every description that can be played in the South.

See Center Pages for Industrial Data and View of Goat Rock Dam.

